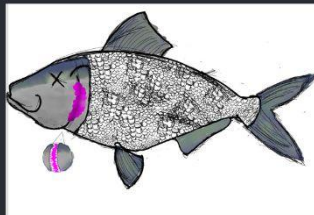


## 4 NEGATIVE EFFECTS RUNOFF EFFECTS

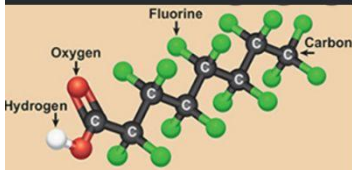
### 1 PAINT

Fish gills can get blocked from paint and suffocate them



### 2 PFAS

Slowly break down in the environment. Organisms including humans have reproductive and immune system problems from exposure to pfas



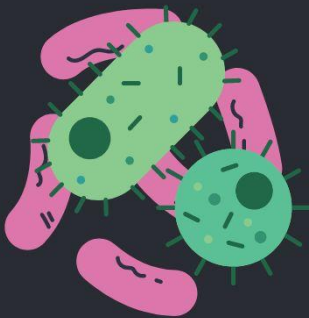
### 3 PHOSPHORUS

Phosphorus is a nutrient needed for plants to grow. Excessive phosphorus leads to overgrowth of invasive plants (water chestnuts in the Charles) and algae killing other organisms



### 4 BACTERIA

Bacteria like E.coli can be present in water bodies due to runoff of contaminated things like feces. Water bodies may become unsafe for recreational use



"The water smells like diarrhea"- Isabella

## 5 THINGS TO Do to improve -STORMWATER

### Pick up your dog's poop

Dog poop can be carried by stormwater which leads to excess nutrients and pathogens in Cambridge water.



### 2. Rain Gardens

Having gardens with porous soil can decrease the amount of runoff entering our water bodies



### 3. Collect Rainwater

Collecting rain water can reduce runoff entering our water bodies.



### 4. Reduce Paint Usage

Paints can be carried off by rain water suffocating fish by blocking gills. Eco-friendly paints are available



### 5. Reduce Fertilizer Use

Fertilizers can get into water bodies from runoff. Biosolid fertilizer are alternatives that cause less nutrient runoff

